

RECYCLING

Reduce, Reuse, RECYCLE. We accept several materials for recycling.

Scrap Metal Recycling: No Charge

Electronics, Tires, and Appliances: These items are banned from landfills in the State of Wisconsin (Admin Code NR544). We accept them for recycling. Fees apply.

Clean Concrete, Clean Shingles, and Yard Waste: We offer a reduced disposal fee for these items to get recycled/composted instead of landfilled.

Batteries: We accept all types of batteries and encourage safe disposal through drop-off recycling. Fees apply based on battery type.

Lightbulbs: We will recycle your lightbulbs for you. Fees apply.

Household Recycling Items: We accept regular household recyclable items year-round. Recycling fees apply.

Event Recycling: Our recycling bin loan program provides bins that are highly visible and easy to use, set up and transport! Borrow at no charge for your next event.

Helping residents
become better
recyclers.

PROUD PARTNER
CENTRAL WISCONSIN
RECYCLING
COLLECTIVE



MARATHON
COUNTY

WE ARE MORE THAN A LANDFILL.
OUR DEPARTMENT OFFERS
YEAR-ROUND DISPOSAL
SERVICES AND RECYCLING.

FOR MORE INFORMATION:

- 📞 INFORMATION LINE: 1-877-270-3989
- 🌐 MARATHONCOUNTYSOLIDWASTE.ORG
- 📘 FACEBOOK.COM/MARATHONCOUNTYSOLIDWASTE
- 📍 172900 STATE HIGHWAY 29, RINGLE, WI 54471



For current hours & rates,
please refer to our website.

Marathon County Solid Waste Department



SAFETY

Safety is our #1 priority! Please follow these important safety instructions.

1. Follow instructions from the Scale and Operations Staff
2. Wear a high visibility vest (available to borrow upon request)
3. No flip flops or sandals
4. Do not approach equipment and large trucks
5. No smoking
6. Obey traffic signs (14mph)
7. Follow the orange diamond signs
8. Back up next to the "Hand Unloading" sign
9. No scavenging
10. Please be patient and look out for other customers & heavy machinery

Follow These Directional Signs



LANDFILL MAP



Instructions for Entering the Landfill

Locate the "hand unloading" sign, then pull your vehicle up or back up close to the sign. Place your load on the large garbage pile.

SERVICES

We are dedicated to public health and the protection of our environment.

Our services include:

Disposal of Anti-freeze & Used Oil: No charge. No appointment needed.

Material Exchange Items: Stop by our "choose to reuse" shelves. No charge.

Household Hazardous Waste: No charge for county residents. Appointment required.

Safe Disposal of Sharps: We accept sharps in approved containers. No charge.

Home Composting: We sell a high quality home compost bin and kitchen pail at affordable rates.

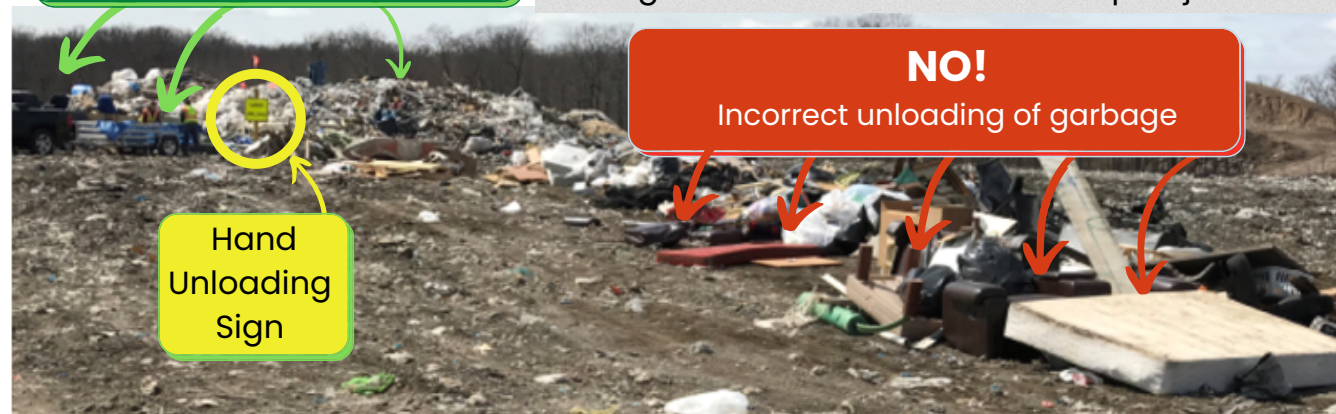
YES!

Customers Unloading Correctly onto the large garbage pile



NO!

Incorrect unloading of garbage



Do not leave a "trail" of garbage on the path to the garbage pile! It makes it difficult to keep the driving surface clear of nails & sharp objects.